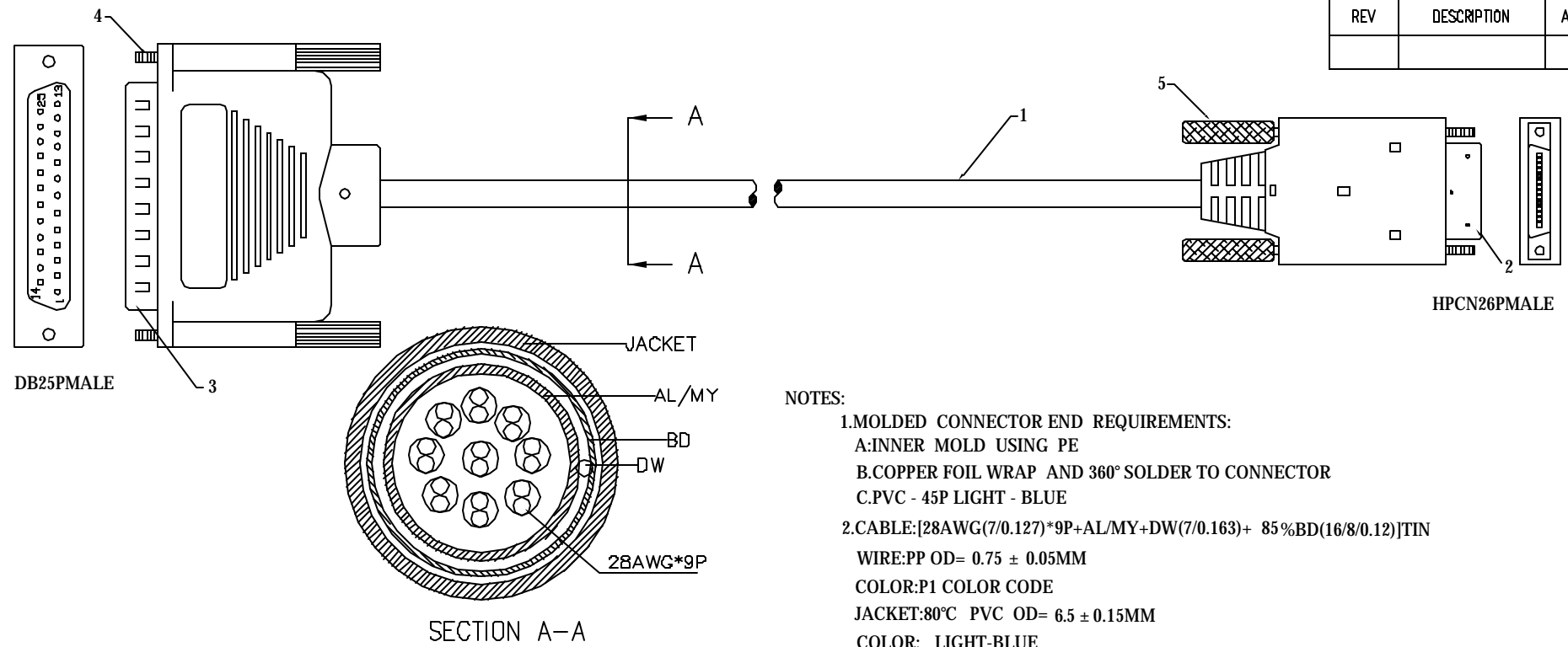


REVISIONS		
REV	DESCRIPTION	APPROVED



- NOTES:
- MOLDED CONNECTOR END REQUIREMENTS:
 - A: INNER MOLD USING PE
 - B: COPPER FOIL WRAP AND 360° SOLDER TO CONNECTOR
 - C: PVC - 45P LIGHT - BLUE
 - CABLE: [28AWG(7/0.127)*9P+AL/MY+DW(7/0.163)+ 85%BD(16/8/0.12)]TIN
 - WIRE: PP OD= 0.75 ± 0.05MM
 - COLOR: P1 COLOR CODE
 - JACKET: 80°C PVC OD= 6.5 ± 0.15MM
 - COLOR: LIGHT-BLUE
 - MARKING: TYPE CL2 75 °C 28AWG (UL) CSA AWM A/B 175 °C 300V FT1
 - FINISHED PRODUCTS LENGTH:
 - (1) LENGTH=3048mm TOLERANCE:±50.8mm

PIN OUTS						
CN26M	DB25M		WIRE COLOR	CN26M	DB25M	WIRE COLOR
1	2	1	BROWN	19	7	6 GRAY/BLACK
14	7		BROWN/WHITE	7	20	WHITE
2	24	2	RED	8	4	7 WHITE/BLACK
15	7		RED/BLACK	11	5	PINK
3	15	3	YELLOW	12	6	8 PINK/BLACK
16	7		YELLOW/BLACK	13	18	9 LIGHT BLUE
4	17	4	GREEN	23 24 26	7	LIGHT BLUE/BLACK
17	7		GREEN/BLACK	shield	1	
5	3	5	BLUE	shield	shield	
18	7		BLUE/WHITE			
6	8	6	GRAY			

HVPS:300V INSULATION: UPON 100M ohm AND 100M ohm ELECTRIC CONDUCTION:INSIDE 5 ohm			
ITEM NO	PART NAMES	QTY	REMARK
1	CABLE:UL 28AWG 9P	1PCS	
2	CONNECTOR:HPCN26P MALE NICKEL-PLATING INSULATOR COLOR:WHITE	1PCS	
3	CONNECTOR:DB25 MALE NICKEL-PLATING INSULATOR COLOR:BLACK	1PCS	
4	SCREW:4*47mm NICKEL-PLATING	2PCS	
5	SCREW:5*47.7mm BLACK-PLATING	2PCS	

JDI TECHNOLOGIES	PRODUCT	HPCN26MALE TO DB25MALE	CUSTOMER	JDI	DRAWN	Elan Xie	
	CUS.NO	SS232MT-10	VERSION	ONE	CHECKED	Jackson Cang	
	DR.NO	SDSS232MT-10	DRAWN DATE	26.03.2001	APPROVED	Eric Lee	

THREE ANGLE PROTECTION